



	<b>Kyo Series 3 axes</b>	<b>BESTSELLER</b> <b>Kyo Series</b>	<b>Kyo XL Series</b>	<b>Compact Series</b>
	Additional third axis for even higher output	High output and excellent print quality	Extra durability for printing on large pallets	Perfect for entering the industrial dtg market or small spaces

**The perfect combination for the highest output: Aeoon PTB and dtg printers**  
*Die perfekte Kombination für den schnellsten Druck: Aeoon PTB und dtg Drucker*

Output per hour*				
Double CMYK	👕 1280	👕 950	👕 950	👕 950
CMYK only	👕 800	👕 650	👕 650	👕 650
CMYK and 8 white heads	👕 800 🖨️ 350	👕 650 🖨️ 250	👕 650 🖨️ 250	Not available
CMYK and 4 white heads	👕 800 🖨️ 250	👕 650 🖨️ 150	👕 650 🖨️ 150	👕 650 🖨️ 150
Machine configuration**				
Amount of printheads	12, 8 or 4	12, 8 or 4	8 or 4	8 or 4
Amount of axes	3	2	2	2
XL machine body	No	No	Yes	No
Integrated humidifier	Available	Available	Available	Available
Print size and pallet options***				
Max. printing size (all axes simultaneously)	Up to 60 x 90cm (middle axis only: up to 92 x 98cm)	Up to 92 x 98cm	Up to 92 x 98cm	Up to 40 x 50cm Up to 50 x 70cm frameless
Standard pallets	Available	Available	Available	Limited
Speciality pallets e.g. Polo, Hoodie, Sleeve, Pocket, Bags	Available	Available	Available	Limited
Custom pallets e.g. larger printing formats	Available	Available	Available	Available

**Questions? Fragen?**  
*We'd love to help! Wir helfen gerne!*

- Watch videos: [www.aeoon.com/videos](http://www.aeoon.com/videos) or visit our website: [www.aeoon.com](http://www.aeoon.com)
- See us live at a tradeshow or visit us in Austria for a custom presentation!
- Download all our product folders: [www.aeoon.com/folder](http://www.aeoon.com/folder)
- Email us: [sales@aeoon.com](mailto:sales@aeoon.com)  
We're looking forward to hearing from you!



(\*) Study based on A4 print with one color pass and highest speed, the output depends on how fast an operator can load the machine.  
 (\*\*) We can help you figure out the configuration that fits to the unique needs of your company. Custom configurations are also available.  
 (\*\*\*) Please contact us to receive more information about our available pallets.

### ■ Aeoon Kyo Series

The Aeoon Kyo Series provides digital textile production on an industrial scale. With our direct to garment printer it is possible to stay ahead of the technological curve in the garment decoration market. Digital dtg printing was once used for low volume or novelty production, but thanks to our new technology and the impressive speed of up to 1280 prints per hour (A4 size, 1 pass, depends on how fast your operator can load the machine), it can now become the industrial production method for garment decoration. High resolution printing, beginning with a native 600 dpi resolution, enables new design possibilities.

### ■ Aeoon Kyo Serie

*Mit der Aeoon Kyo Series wird der digitale Textildruck endlich tauglich für die Massenproduktion. Der digitale dtg-Druck wurde ursprünglich für den Druck von kleinen Mengen eingesetzt. Dank unserer neuen Technologie und der beeindruckenden Geschwindigkeit von bis zu 1280 Drucken pro Stunde (A4 Größe, 1 Pass, abhängig davon, wie schnell der Bediener die Maschine laden kann), wird der digitale dtg Druck zu einer industriellen Produktionsmethode für die Dekoration von Textilien. Detail- und farbintensive Drucke mit einer nativen Auflösung von 600 dpi erlauben neue Design-Möglichkeiten.*





## Features of the Kyo Series Funktionsübersicht

Touchscreen & intuitive  
Software-Design  
*Touchscreen & intuitive  
Software*

High precision linear axis  
*Hochpräzise Linearachse*

Durable machine body for industrial use  
*Langlebiges Vollmetall-Gehäuse*

Up to 12 printheads  
*Bis zu 12 Druckköpfe*

600 dpi native resolution,  
up to 2400 dpi  
*600 dpi native Auflösung,  
bis zu 2400 dpi*



Customize with Add-Ons  
*Anpassbar durch Add-Ons*

Made in Austria  
*Hergestellt in Österreich*

Two or three axes with exchangeable pallets  
*Zwei oder drei Achsen mit austauschbaren Paletten*

Automatic Cleaning  
and Capping Station  
*Automatische Reinigungs-  
und Cappingstation*

### 1. Pretreat

A correct pretreatment will increase vibrancy and sharpness and enable you to print with white ink.  
Necessary equipment: Aeoon PTB, dryer, heat-press (necessary when printing with white ink).

### 2. Print

Choose a high quality design and load it into the RIP-Software. This software translates it into a printable file and sends it directly to the Aeoon dtg printer.  
The printing itself is the easiest step. You can choose your design on the machine's touchscreen, if necessary adjust the settings and print. To get the maximum out of this process, we offer different configurations of our dtg printers to exactly meet your needs.  
Necessary equipment: Aeoon dtg printer, Aeoon RIP Software, shop integration system (optional). Tip: It is easy and very fast to change pallets! We have pallets for different uses and sizes available.

### 3. Cure

After printing, the textiles need to be cured properly. Only then the garments will have excellent washability.  
Necessary equipment: Dryer.

### 1. Vorbehandlung

Richtiges Pretreatment erhöht die Leuchtkraft und Schärfe und ermöglicht es, mit weißer Tinte zu drucken.  
Benötigte Ausrüstung: Aeoon PTB, Trockner, Hitze-press (notwendig wenn mit weißer Tinte gedruckt wird).

### 2. Druck

Wählen Sie ein Design und laden Sie es in die RIP Software. Diese Software übersetzt Ihr Design in ein druckbares Format und schickt es direkt an Ihren Aeoon dtg Drucker.  
Das Drucken selbst ist der leichteste Schritt. An der Maschine können Sie am Touchscreen Ihr Design auswählen, falls notwendig die Einstellungen anpassen und drucken. Um das beste Ergebnis zu erzielen bieten wir verschiedene Abstimmungen für unsere dtg Drucker die Ihre Anforderungen exakt erfüllen.  
Benötigte Ausrüstung: Aeoon dtg Drucker, Aeoon RIP Software, Shop Integration System (optional). Tipp: Paletten können einfach und schnell gewechselt werden. Sie sind in unterschiedlichen Größen und für verschiedene Spezialanwendungen erhältlich!

### 3. Fixierung

Nach dem Druck müssen die Textilien richtig fixiert werden. Nur dann erhalten die Textilien die gewünschte Waschbeständigkeit.  
Benötigte Ausrüstung: Trockner.

### Massive Output



Up to now, the Kyo Series is the fastest dtg printer in its market segment with an output of up to 1280 t-shirts per hour (A4 printing size). This is obtained by using up to twelve print heads with 2558 nozzles with a native 600 dpi resolution and a fire speed of up to 40,000 ink drops per second in four different drop sizes.

Mit einem Output von bis zu 1280 T-Shirts pro Stunde (A4 Druckgröße) ist die Aeoon Kyo Serie der schnellste dtg Drucker in seinem Marktsegment. Dies wird durch die Nutzung von bis zu zwölf Druckköpfen mit jeweils 2558 Düsen und einer Feuerrate von bis zu 40.000 Tropfen pro Sekunde sowie 600 dpi nativer Auflösung ermöglicht.

### Flexible



We build the printer that fits your business. The Aeoon Kyo series not only enables you to react to the demands of your customers flexibly, it also has the unique ability to grow with your business. We designed our printer modularly, which means you can upgrade and add features such as additional print heads for higher speed or custom pallets for new areas of application.

Wir passen jeden Drucker speziell auf die Bedürfnisse unserer Kunden an. Unsere Aeoon Kyo Serie ermöglicht es, flexibel auf die Wünsche des Marktes einzugehen. Zusätzlich kann die Ausstattung der Maschine mit Ihrem Unternehmen „mitwachsen“. Wir haben unsere Drucker modular entworfen. Das bedeutet, dass die Maschinen, falls möglich, nachgerüstet werden können, zum Beispiel mit zusätzlichen Druckköpfen für mehr Geschwindigkeit oder speziellen Paletten für neue Anwendungsbereiche.

### Speed and vibrant colors

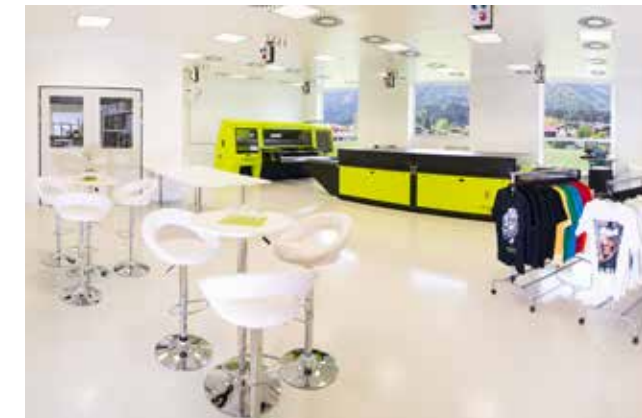


Our colors are optimized for an industrial scale textile production and fulfill the highest quality demands on color brightness and washability. Our pigment inks are available in colors and white. They meet environmental standards and received the Oeko-Tex and GOTS (Global Standards) certifications.

PS: We also offer other inks for special applications, for example reactive or UV inks. Contact us for more information.

Unsere Farben sind für die industrielle Textilproduktion optimiert und erfüllen die höchsten Qualitätsstandards in der Waschbeständigkeit und Farbbrillanz. Unsere Pigmenttinten sind in Farben und weiß erhältlich. Sie erfüllen die Umweltqualitätsstandards und sind mit Oeko-Tex und GOTS (Global Standards) Zertifikaten ausgezeichnet. PS: Zusätzlich haben wir noch unterschiedlichste Tinten für andere Anwendungen im Angebot, z.B. Reaktiv- und UV-Tinte. Weitere Informationen auf Anfrage.

### We'd love to help!



We are aware that the learning curve in the digital dtg printing process is steep. With the installation of every machine, one of our technicians will give you a basic training on how to handle the equipment. In addition, we offer regular trainings for our customers, technicians and resellers. In the case of questions or problems, our dedicated support will do their utmost to help you and get you back into production mode as soon as possible.

Wir sind uns bewusst, dass der Einstieg in eine neuartige Druckart wie dem digitalen Textildruck oft unüberwindbar erscheint. Mit der Installation jeder Maschine bieten wir ein Grundlagen-Training über die korrekte Bedienung der Maschine an. Zusätzlich gibt es bei uns vor Ort regelmäßig Schulungen für unsere Kunden, Techniker und Händler. Bei Fragen oder Problemen hilft unser engagierter Support schnell und unkompliziert - damit die Produktion so schnell wie möglich wieder aufgenommen werden kann.



**Available Machine Configurations**

Technical Hardfacts	Kyo 4/2	Kyo 4/3	Kyo 4/2 XL	Kyo 8/2	Kyo 8/3
<b>Printheads</b>	4	4	4	8	8
<b>Colours</b>	4x CMYK			4x CMYK	
<b>White</b>	0	0	0	4	4
<b>Tables</b>	2	3	3	2	3
<b>Printing Area pro Pallet with all axis*</b>	up to 92x98 cm	up to 60x90 cm	up to 92x98 cm	up to 92x98 cm	up to 60x90 cm
<b>Printable Materials</b>	cotton, synthetics, mixed fibers, canvas, wood, leather and more.	cotton, synthetics, mixed fibers, canvas, wood, leather and more.	cotton, synthetics, mixed fibers, canvas, wood, leather and more.	cotton, synthetics, mixed fibers, canvas, wood, leather and more.	cotton, synthetics, mixed fibers, canvas, wood, leather and more.
<b>Output/Hour - Lights***</b>	650	800	800	800	800
<b>Output/Hour - Darks***</b>	0	0	0	150	350
<b>Printing Resolution</b>	up to 2400 dpi	up to 2400 dpi	up to 2400 dpi	up to 2400 dpi	up to 2400 dpi
<b>Humidity System</b>	Optional	Optional	Optional	Optional	Optional
<b>Machine Dimension // Weight</b>	4100 mm x 2900 mm x 2000 mm // 2.000 kg	4100 mm x 2900 mm x 2000 mm // 2.000 kg	4100 mm x 2900 mm x 2000 mm // 2.000 kg	4100 mm x 2900 mm x 2000 mm // 2.000 kg	4100 mm x 2900 mm x 2000 mm // 2.000 kg
<b>Transport Dimension // Weight</b>	4300 mm x 2000 mm x 2200 mm // 2.500 kg	4300 mm x 2000 mm x 2200 mm // 2.500 kg	4300 mm x 2000 mm x 2200 mm // 2.500 kg	4300 mm x 2000 mm x 2200 mm // 2.500 kg	4300 mm x 2000 mm x 2200 mm // 2.500 kg
<b>Environmental Conditions</b>	Temperature: 20-28 °C // Humidity: 50-70% non condensing	Temperature: 20-28 °C // Humidity: 50-70% non condensing	Temperature: 20-28 °C // Humidity: 50-70% non condensing	Temperature: 20-28 °C // Humidity: 50-70% non condensing	Temperature: 20-28 °C // Humidity: 50-70% non condensing
<b>Electrical Supply</b>	400/208 VAC, 50/60 Hz, 3 Ph, 16A - Max Power Input: 10.04 kVA	400/208 VAC, 50/60 Hz, 3 Ph, 16A - Max Power Input: 10.04 kVA	400/208 VAC, 50/60 Hz, 3 Ph, 16A - Max Power Input: 10.04 kVA	400/208 VAC, 50/60 Hz, 3 Ph, 16A - Max Power Input: 10.04 kVA	400/208 VAC, 50/60 Hz, 3 Ph, 16A - Max Power Input: 10.04 kVA
<b>Compressed Air Supply</b>	5 BAR - Quaiy Class 5 (residual oil: 25 mg/m <sup>3</sup> - residual dust: 40 µm/ 10 mg/m <sup>3</sup> - residual water +7 DTP / 7.8 gm/m <sup>3</sup> (Max air consumption: 500 L/min)	5 BAR - Quaiy Class 5 (residual oil: 25 mg/m <sup>3</sup> - residual dust: 40 µm/ 10 mg/m <sup>3</sup> - residual water +7 DTP / 7.8 gm/m <sup>3</sup> (Max air consumption: 500 L/min)	5 BAR - Quaiy Class 5 (residual oil: 25 mg/m <sup>3</sup> - residual dust: 40 µm/ 10 mg/m <sup>3</sup> - residual water +7 DTP / 7.8 gm/m <sup>3</sup> (Max air consumption: 500 L/min)	5 BAR - Quaiy Class 5 (residual oil: 25 mg/m <sup>3</sup> - residual dust: 40 µm/ 10 mg/m <sup>3</sup> - residual water +7 DTP / 7.8 gm/m <sup>3</sup> (Max air consumption: 500 L/min)	5 BAR - Quaiy Class 5 (residual oil: 25 mg/m <sup>3</sup> - residual dust: 40 µm/ 10 mg/m <sup>3</sup> - residual water +7 DTP / 7.8 gm/m <sup>3</sup> (Max air consumption: 500 L/min)
<b>Accessories</b>	customized pallets, order mode system, automatic height adjustment control.	customized pallets, order mode system, automatic height adjustment control.	customized pallets, order mode system, automatic height adjustment control.	customized pallets, order mode system, automatic height adjustment control.	customized pallets, order mode system, automatic height adjustment control.
<b>Technical Details</b>	Linux OS, Aeoon RIP Software, Kyocera KJ4B Print Heads, Full Automatic Cleaning and Capping Station, Touchscreen with Aeoon Intuitive Software, High Precision Linear Axis and Heavy Duty Industrial Use Chassis	Linux OS, Aeoon RIP Software, Kyocera KJ4B Print Heads, Full Automatic Cleaning and Capping Station, Touchscreen with Aeoon Intuitive Software, High Precision Linear Axis and Heavy Duty Industrial Use Chassis	Linux OS, Aeoon RIP Software, Kyocera KJ4B Print Heads, Full Automatic Cleaning and Capping Station, Touchscreen with Aeoon Intuitive Software, High Precision Linear Axis and Heavy Duty Industrial Use Chassis	Linux OS, Aeoon RIP Software, Kyocera KJ4B Print Heads, Full Automatic Cleaning and Capping Station, Touchscreen with Aeoon Intuitive Software, High Precision Linear Axis and Heavy Duty Industrial Use Chassis	Linux OS, Aeoon RIP Software, Kyocera KJ4B Print Heads, Full Automatic Cleaning and Capping Station, Touchscreen with Aeoon Intuitive Software, High Precision Linear Axis and Heavy Duty Industrial Use Chassis
<b>External Spray Machines</b>	Aeoon Industrial Pre Treatment Machine - PTB	Aeoon Industrial Pre Treatment Machine - PTB	Aeoon Industrial Pre Treatment Machine - PTB	Aeoon Industrial Pre Treatment Machine - PTB	Aeoon Industrial Pre Treatment Machine - PTB

\* Ask for full Pallet Sizes information. Custom pallets also available. Frameless. // \*\* 50 x 70 cm frameless pallets // \*\*\* Study based on an A4 format print, with one colour pass and highest speed. The Output depends how fast a Operator can load the shirts.

Features	Kyo 8/2 CMYK	Kyo 8/3 CMYK	Kyo 8/2 XL	Kyo 12/2	Kyo 12/3
<b>Print Heads</b>	8	8	8	12	12
<b>Colours</b>	8x CMYK	4x CMYK	4x or 8x CMYK	4x CMYK	4x CMYK
<b>White</b>	0	4	4	8	8
<b>Tables</b>	2	3	2	2	3
<b>Printing Area pro Pallet with all axis</b>	up to 92x98 cm	up to 60x90 cm	up to 92x98 cm	up to 92x98 cm	up to 60x90 cm
<b>Printable Materials</b>	cotton, synthetics, mixed fibers, canvas, wood, leather and more.	cotton, synthetics, mixed fibers, canvas, wood, leather and more.	cotton, synthetics, mixed fibers, canvas, wood, leather and more.	cotton, synthetics, mixed fibers, canvas, wood, leather and more.	cotton, synthetics, mixed fibers, canvas, wood, leather and more.
<b>Output/Hour - Lights***</b>	1280	1280	800	800	800
<b>Output/Hour - Darks***</b>	0	0	350	350	350
<b>Printing Resolution</b>	up to 2400 dpi	up to 2400 dpi	up to 2400 dpi	up to 2400 dpi	up to 2400 dpi
<b>Humidity System</b>	Optional	Optional	Optional	Optional	Optional
<b>Machine Dimension // Weight</b>	4100 mm x 2900 mm x 2000 mm // 2.000 kg	4100 mm x 2900 mm x 2000 mm // 2.000 kg	4100 mm x 2900 mm x 2000 mm // 2.000 kg	4100 mm x 2900 mm x 2000 mm // 2.000 kg	4100 mm x 2900 mm x 2000 mm // 2.000 kg
<b>Transport Dimension // Weight</b>	4300 mm x 2000 mm x 2200 mm // 2.500 kg	4300 mm x 2000 mm x 2200 mm // 2.500 kg	4300 mm x 2000 mm x 2200 mm // 2.500 kg	4300 mm x 2000 mm x 2200 mm // 2.500 kg	4300 mm x 2000 mm x 2200 mm // 2.500 kg
<b>Environmental Conditions</b>	Temperature: 20-28 °C // Humidity: 50-70% non condensing	Temperature: 20-28 °C // Humidity: 50-70% non condensing	Temperature: 20-28 °C // Humidity: 50-70% non condensing	Temperature: 20-28 °C // Humidity: 50-70% non condensing	Temperature: 20-28 °C // Humidity: 50-70% non condensing
<b>Electrical Supply</b>	400/208 VAC, 50/60 Hz, 3 Ph, 16 A - max power input: 10.04 kVA	400/208 VAC, 50/60 Hz, 3 Ph, 16 A - max power input: 10.04 kVA	400/208 VAC, 50/60 Hz, 3 Ph, 16 A - max power input: 10.04 kVA	400/208 VAC, 50/60 Hz, 3 Ph, 16 A - max power input: 10.04 kVA	400/208 VAC, 50/60 Hz, 3 Ph, 16 A - max power input: 10.04 kVA
<b>Compressed Air Supply</b>	5 BAR - Quaiy Class 5 (residual oil: 25 mg/m <sup>3</sup> - residual dust: 40 µm/ 10 mg/m <sup>3</sup> - residual water +7 DTP / 7.8 gm/m <sup>3</sup> (max air consumption: 500 L/min)	5 BAR - Quaiy Class 5 (residual oil: 25 mg/m <sup>3</sup> - residual dust: 40 µm/ 10 mg/m <sup>3</sup> - residual water +7 DTP / 7.8 gm/m <sup>3</sup> (max air consumption: 500 L/min)	5 BAR - Quaiy Class 5 (residual oil: 25 mg/m <sup>3</sup> - residual dust: 40 µm/ 10 mg/m <sup>3</sup> - residual water +7 DTP / 7.8 gm/m <sup>3</sup> (max air consumption: 500 L/min)	5 BAR - Quaiy Class 5 (residual oil: 25 mg/m <sup>3</sup> - residual dust: 40 µm/ 10 mg/m <sup>3</sup> - residual water +7 DTP / 7.8 gm/m <sup>3</sup> (max air consumption: 500 L/min)	5 BAR - Quaiy Class 5 (residual oil: 25 mg/m <sup>3</sup> - residual dust: 40 µm/ 10 mg/m <sup>3</sup> - residual water +7 DTP / 7.8 gm/m <sup>3</sup> (max air consumption: 500 L/min)
<b>Accessories</b>	customized pallets, order mode system, automatic height adjustment control.	customized pallets, order mode system, automatic height adjustment control.	customized pallets, order mode system, automatic height adjustment control.	customized pallets, order mode system, automatic height adjustment control.	customized pallets, order mode system, automatic height adjustment control.
<b>Technical Details</b>	Linux OS, Aeoon RIP Software, Kyocera KJ4B Print Heads, Full Automatic Cleaning and Capping Station, Touchscreen with Aeoon Intuitive Software, High Precision Linear Axis and Heavy Duty Industrial Use Chassis	Linux OS, Aeoon RIP Software, Kyocera KJ4B Print Heads, Full Automatic Cleaning and Capping Station, Touchscreen with Aeoon Intuitive Software, High Precision Linear Axis and Heavy Duty Industrial Use Chassis	Linux OS, Aeoon RIP Software, Kyocera KJ4B Print Heads, Full Automatic Cleaning and Capping Station, Touchscreen with Aeoon Intuitive Software, High Precision Linear Axis and Heavy Duty Industrial Use Chassis	Linux OS, Aeoon RIP Software, Kyocera KJ4B Print Heads, Full Automatic Cleaning and Capping Station, Touchscreen with Aeoon Intuitive Software, High Precision Linear Axis and Heavy Duty Industrial Use Chassis	Linux OS, Aeoon RIP Software, Kyocera KJ4B Print Heads, Full Automatic Cleaning and Capping Station, Touchscreen with Aeoon Intuitive Software, High Precision Linear Axis and Heavy Duty Industrial Use Chassis
<b>External Spray Machines</b>	Aeoon Industrial Pre Treatment Machine - PTB	Aeoon Industrial Pre Treatment Machine - PTB	Aeoon Industrial Pre Treatment Machine - PTB	Aeoon Industrial Pre Treatment Machine - PTB	Aeoon Industrial Pre Treatment Machine - PTB

Pretreat up to 930 garments per hour  
*Vorbehandlung für bis zu 930 Stück pro Stunde*



••• Aeoon PTB Pretreatment Series

We designed the Aeoon PTB to keep up with the extremely high speeds of our Aeoon dtg printers. It can pretreat up to 930 garments per hour. To make the handling of the pretreatment unit as simple as possible, we added helpful features like the self cleaning function for the belt or the integrated nozzle capping station. To save cost, you can set the width and length of your custom spraying areas individually.

••• Aeoon PTB Pretreatment Series

*Wir haben die Aeoon PTB entwickelt, um mit der extrem schnellen Geschwindigkeit unserer Aeoon dtg Drucker mithalten zu können. Es können bis zu 930 Stück pro Stunde vorbehandelt werden. Um die Bedienung so einfach wie möglich zu halten, haben wir viele hilfreiche Features eingebaut, wie eine Selbstreinigungsfunktion des Förderbandes und eine integrierte Reinigungsstation für die Sprühdüsen. Um die Kosten zu senken, kann die Länge und Breite des Sprühbereiches individuell festgelegt werden.*



For more information visit our website or scan the QR code to download our folder.  
*Weitere Informationen gibt es auf unserer Webseite oder mit diesem QR-Code zum Herunterladen.*